

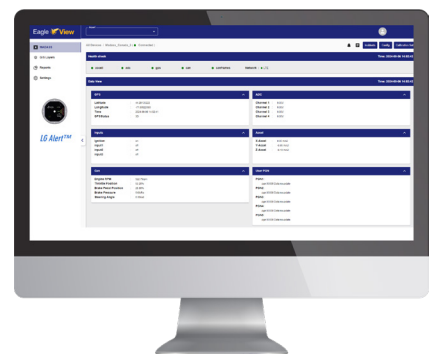
LG Alert™ Rollover Warning System



Your Airfield Solutions Partner

Designed for mission critical Airport Rescue and Fire Fighting (ARFF) vehicles, which face unique rollover risks due to high centers of gravity, rapid cornering speeds, and uneven terrain. The LG Alert™ Rollover Warning System provides ARFF operators with real-time lateral acceleration feedback, helping them recognize when they are nearing critical vehicle stability limits.

The LG Alert™ system fully meets the NFPA 414 (4.12.8) requirement for a lateral acceleration indicator with adjustable sensitivity, providing both visual and audio alerts. Ideal for ARFF vehicle specifications, it is approved by recognized safety standards and ensures NFPA 414 compliance.



System Features:

- **Situational awareness multiplier**
- **Audible and visual prompts to vehicle operator**
- **Customized Calibration**
- **Road Noise Filtering eliminating nuisance alerting**
- **Quick installation & setup for any straight chassis vehicle**
- **Demo Kits Available**

eagle-aerospace.com


1-866-241-3264

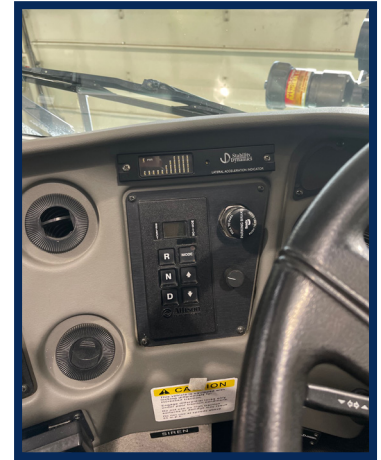

info@eagle-aerospace.com





Enhanced Safety

- Detects potentially hazardous lateral forces, providing immediate visual and audible notifications
- Instant feedback allows drivers to react quickly—adjusting vehicle speed or maneuvers—to help prevent rollovers
- The system constantly processes road and vehicle data, ensuring drivers remain aware of changing conditions at all times
- Can be tailored to each vehicle’s chassis and center of gravity to ensure accurate detection and reduce false alarms



Customizable

- Configurable alert zones
- Additional display layers
- Temporary “No-Go” zones
- Speed and heading restrictions
- Integration with GIS and imagery databases
- Typically installed in under one hour, reducing downtime for critical ARFF operations
- Fleet managers can standardize safety across multiple vehicle models and years
- On-site demonstrations streamline training and familiarization
- Offers incremental visual and audible warnings as lateral “g” forces increase, alerting drivers before loss of control occurs
- Tailored to each vehicle’s chassis and center of gravity to ensure accurate detection and reduce false alarms
- Minimizes nuisance alerts, allowing drivers to focus on essential warnings
- Deployed in thousands of emergency, commercial, and military vehicles across 100+ countries



Hosted on the
Eagle View
Hub

